

SECTION 1 - SECTION 1

Question No.1

Ratio of the earnings of A and B is 4: 7. If the earnings of A increase by 50% and those of B decrease by 25%, the new ratio of their earnings become 8: 7. What are A's earnings?

- Rs. 2,800
- Data inadequate
- Rs. 26,000
- Rs. 21,000

Question No.2

Which one of the following is same as Flood, Fire, Cyclone?

- Damage
- Earthquake
- Accident
- Rain

Question No.3

? is to Touch as ear is to ?

- Skin, Hear
- Hand, Know
- Hair, Dirt
- Experience, Feeling

Question No.4

When and where the first computer was installed in India?

- Indian Statistical Institute, Kolkata in 1955
- Indian Institute of Science, Bangalore in 1971
- Indian Institute of Management, Ahmedabad, in 1975
- Indian Institute of Statistics, Delhi in 1957

Question No.5

Who won the 2019 Presidency election of Ukraine?

- Viktor Yushchenko
- Volodymyr Zdensky
- Petro Poroshenko
- Leonid Kravchuk

Question No.6

Generally all the formula in Excel start with the sign of –

- Equivalent
- And
- Astrix
- Dollor

Question No.7

In the following series one number is wrong, after searching the wrong number find out the correct number in its place.

8, 12, 16, 23, 32, 43, 56

- 11
- 52
- 9
- 21

Question No.8

Read the following clues and answer the questions.

Ms. Kaviya and her three roommates are all busy career women, with little time (or energy) for cooking meals, so they have devised a 'dinner duty' rotation: each woman is assigned to cook dinner on a different night, from Monday through Thursday. (On weekends, they eat out). From the following clues, determine each woman's full name and assigned night for 'dinner duty', along with the main dish which each cooked on her night last week (one woman made mutton).

- a. Asha (who is not Ms. Tejasree) cooks dinner earlier in the week than Ms. Elavarasi, but later than the roommate who served tandoori chicken
- b. Neither Bhargavi nor Ms. Tejasree has Monday's dinner duty
- c. Sahana is not Ms. Mumtaj
- d. Deepika serves her meal later in the week than the roommate who cooked fish curry, who does not cook on Monday.
- e. Tuesday's meal was fried chicken.

What was cooked for dinner on Tuesday?

- Mutton
- Tandoori chicken
- Fried chicken
- Fish curry

Question No.9

Which of the following football team has won the 2019 Santosh Trophy?

- Tamil Nadu
- Punjab
- Services
- Indian Railways

Question No.10

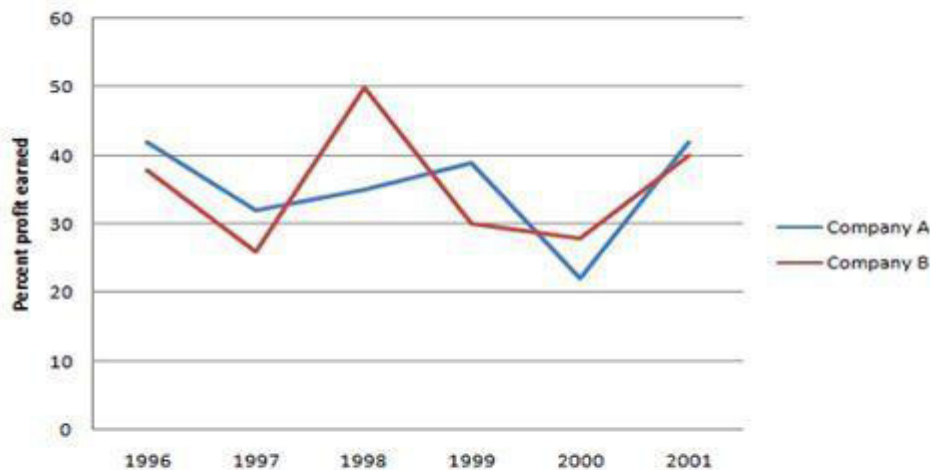
What are the chances that no two boys are sitting together for a photograph if there are 5 girls and 2 boys?

- 5/7
- 1/21
- 2/7
- 4/7

Question No.11

0

Study the following graph to answer the following questions: Percent profit earned by two companies A & B over the years. Profit = Income - Expenditure.



Expenditure of Company B in 1999 was 90% of its expenditure in 1998. Income of Company B in 1999 was what percent of its income in 1998?

- 99 $\frac{1}{3}$
- 130.5
- 96 $\frac{2}{3}$
- 121.5

Question No.12

Each problem, given below, consists of a word or phrase. Choose one word, whose meaning is closest to that of the word or phrase.

To tell the truth solemnly

- Testify
- Assert
- Exaggerate
- Affirm

Question No.13

A is twice as fast as B and B is thrice as fast as C. The journey covered by C in 42 minutes will be covered by A in:

- 7 minute

- 14 minute
- 28 minute
- 35 minute

Question No.14

Each problem, given below, consists of a word or phrase. Choose one word, whose meaning is closest to that of the word or phrase.

Both secure and well-deserved

- Condign
- Condemned
- Punished
- Conditional

Question No.15

In India, the Foreign Exchange Reserves are kept in the custody of which among the following?

- Reserve Bank of India
- Ministry of Finance
- Selected Public Sector Banks
- EXIM bank

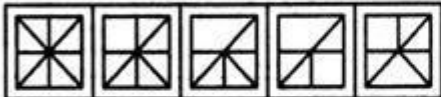
Question No.16

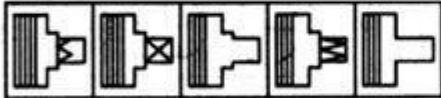
0


In each of the following questions, choose the set of figures which follows the given rule.


Choose the set of figures which follows the given rule.

Rule: The series becomes simpler as it proceeds

(1) 

(2) 

(3) 

(4) 

- 4
- 1
- 3
- 2

Question No.17

Choose the correct transformation of the given direct speech into indirect narration:

She said to her, "Why don't you go today?"

- She asked her why she did not go today.
- She said to her that why she doesn't go today.
- She asked her why she did not go that day.
- She asked her if she was going that day.

Question No.18

A sum of Rs. 725 is lent in the beginning of a year at a certain rate of interest. After 8 months, a sum of Rs. 362.50 more is lent but at the rate twice the former. At the end of the year, Rs. 33.50 is earned as interest from both the loans. What was the original rate of interest?

- 3.60%
- 4.50%
- 5%
- None of these

Question No.19

Each problem, given below, consists of a word or phrase. Choose one word, whose meaning is closest to that of the word or phrase.

Tending to get angry easily

- Excited
- Shameless
- Yielding
- Irascible

Question No.20

0

Study the following table carefully to answer the questions.

Subject Student	History (75)	Geography (80)	Maths (120)	Science (150)	English (75)	Hindi (50)
A	80	85	89	79	69	76
B	74	79	92	84	72	67
C	86	65	76	82	82	87
D	69	72	62	90	78	68
E	64	64	75	86	65	62
F	76	82	95	78	60	73

Note: Figure in bracket indicates the maximum marks assigned for the subject.

What is the average percentage of marks obtained by all the students in Maths?

- 97.8
- 89.5
- 81.5
- 74.5

Question No.21

0

Study the following table carefully to answer the questions.

Subject Student	History (75)	Geography (80)	Maths (120)	Science (150)	English (75)	Hindi (50)
A	80	85	89	79	69	76
B	74	79	92	84	72	67
C	86	65	76	82	82	87
D	69	72	62	90	78	68
E	64	64	75	86	65	62
F	76	82	95	78	60	73

Note: Figure in bracket indicates the maximum marks assigned for the subject.

What is the overall percentage of marks obtained by 'A' in all the subjects together?

(Rounded off to two digits after decimal)

- 81.33
- 79.67
- 78.50
- 80.55

Question No.22

0

The table shows the National Food Corporation as on 1st Jan, (in Million Tonnes) from 2007 to 2015.

National Food Corporation as on 1st Jan (in Million tonnes)

Sl.No.	Year	Rice	Wheat
1	2007	5.65	5.61
2	2008	8.66	9.24
3	2009	8.63	5.28
4	2010	8.52	3.28
5	2011	11.72	10.82
6	2012	17.42	12.88
7	2013	15.41	13.15
8	2014	12.90	6.90
9	2015	11.49	6.75

If the decline in the stock of rice continues at the same rate as that for 2015, then the approximate stock of rice for 2016 will be:

- 11.23
- 11.09
- 10.23
- 10.32

Question No.23

In case of death, resignation or removal of Governor _____ acts as the Governor.

- The Chief Justice of High Court
- The President of India
- The Speaker
- The Chief Minister

Question No.24

0

Study the following table carefully to answer the questions.

Subject Student	History (75)	Geography (80)	Maths (120)	Science (150)	English (75)	Hindi (50)
A	80	85	89	79	69	76
B	74	79	92	84	72	67
C	86	65	76	82	82	87
D	69	72	62	90	78	68
E	64	64	75	86	65	62
F	76	82	95	78	60	73

Note: Figure in bracket indicates the maximum marks assigned for the subject.

What are the total marks obtained by 'D' in all the subjects together?

- 415

- 402.75
- 427.25
- None of these

Question No.25

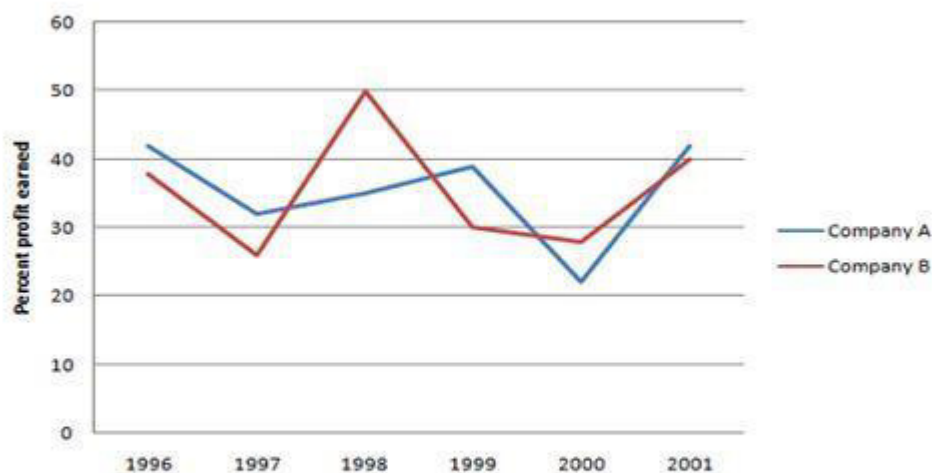
What will come in place of question mark (?) in the following series?
AB DEF HIJK ? STUVWX

- QRST
- MNOPQ
- LMNOP
- LMNO

Question No.26

0

Study the following graph to answer the following questions: Percent profit earned by two companies A & B over the years. Profit = Income - Expenditure.



If the income of Company A in 1998 was Rs. 1, 42,500 what was its expenditure in that year?

- RS. 1,05,000
- RS. 95,500
- RS. 99,500
- None of these

Question No.27

The name of the first electronic computer is –

- E NIAC
- UNIVAC
- E DSAC
- E DVAC

Question No.28

Bombay Express left Delhi for Bombay at 14:30 hours, travelling at speed of 60 kmph and Rajdhani Express left Delhi for Bombay on the same day at 60:30 hours, travelling at a speed of 80 kmph. How far away from Delhi will the two trains meet?

- 480 km
- 120 km
- 500 km
- 260 km

Question No.29

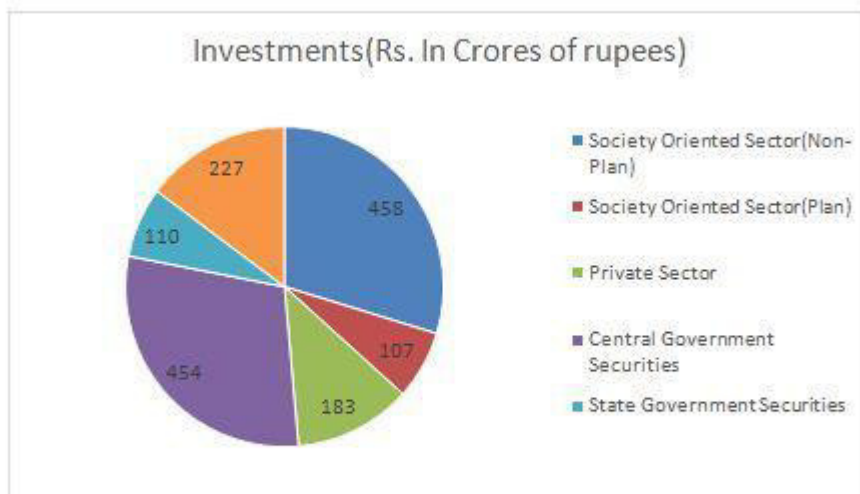
Which of the following statements is not correct?

- Money Bills cannot be introduced in the Rajya Sabha
- The President can dissolve the Lok Sabha on the advice of Prime Minister
- As nearly as possible one-third members of the Rajya Sabha retire on the expiration of every third year
- The 42nd Amendment extended the term of the Lok Sabha and the state Legislative Assemblies from 5 years to 6 years

Question No.30

0

The gross investments of Life Insurance Corporation of India (in Crores of rupees) in different sectors are shown in the Pie chart given below -



On the basis of above information answer the following questions.

The investment in society oriented sectors (Plan and Non-Plan) is than the investment in Government Securities (Central and State) by -

- More, 4 crore
- More, 111 crore
- More, 1 crore
- Less, 106 crore

Question No.31

The compound interest on a certain sum for 2 years at 10% per annum is Rs. 525. The simple interest on the same sum for double the time at half the rate percent per annum is:

- Rs. 600
- Rs. 500
- Rs. 800
- Rs. 400

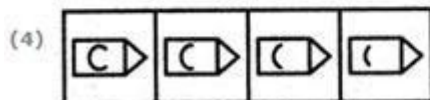
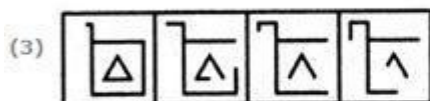
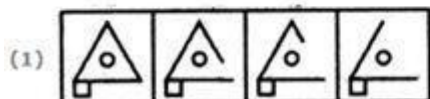
Question No.32

0

In each of the following questions, choose the set of figures which follows the given rule.

Choose the set of figures which follows the given rule.

Rule: Closed figures become more and more open and open figures become more and more closed



- 2
- 1
- 4
- 3

Question No.33

Biosphere Reserves are also notified as –

- Ecosystems
- Woodlands
- National parks
- Conservation

Question No.34

'Cardboard' is related to 'Opaque' in the same way as 'Glass' is related to –

- Lustrous
- Brittle

- Glossy
- Transparent

Question No.35

'Skirmish' is related to 'War' in the same way as 'Disease' is related to –

- Medicine
- Infection
- Patient
- Epidemic

Question No.36

If a data can take only a limited number of values, the classes of these data are called as

- Discrete
- Inclusive
- exclusive
- Continuous

Question No.37

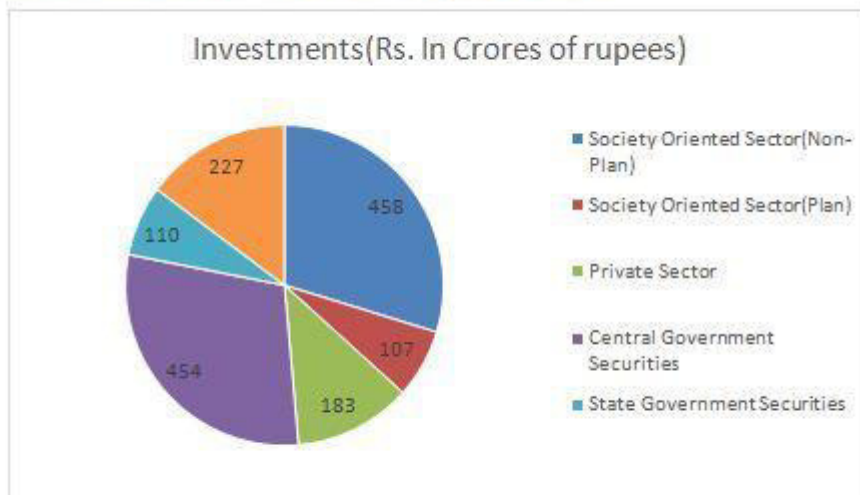
The grant of franchise to women on equal terms with men is assertion of the principle of –

- Political equality
- Civil equality
- Natural equality
- Social equality

Question No.38

0

The gross investments of Life Insurance Corporation of India (in Crores of rupees) in different sectors are shown in the Pie chart given below -



On the basis of above information answer the following questions.

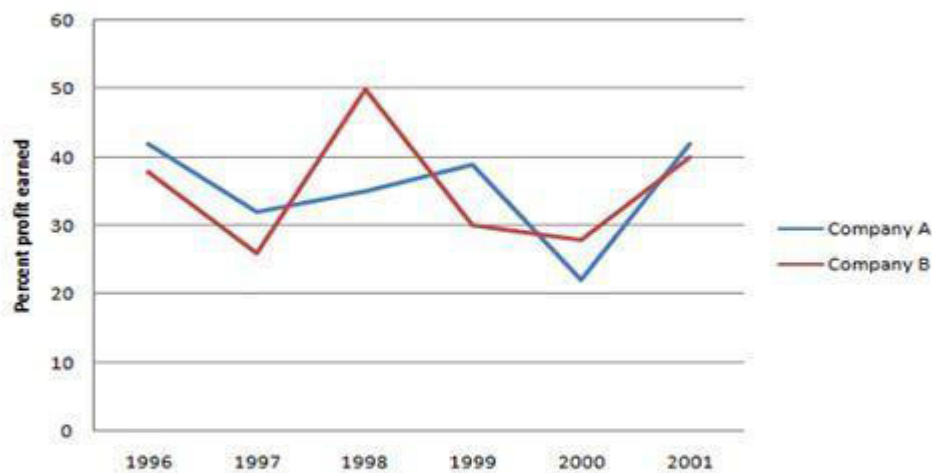
The investment in private sector is nearly ----- percent higher than the investment in State Government Securities.

- 54
- 46
- 40
- 66

Question No.39

0

Study the following graph to answer the following questions: Percent profit earned by two companies A & B over the years. Profit = Income - Expenditure.



Total expenditure of Company A & B together in 2001 was Rs. 13.5 lakhs. What was the total income of the two companies (in Rs. lakh) in that year?

- Cannot be determined
- 19.75
- 19.575
- 20.25

Question No.40

Peter invested an amount of Rs. 12,000 at the rate of 10% p.a. simple interest and another amount at the rate of 20% p.a. simple interest. The total interest earned at the end of one year on the total amount invested become 14% p.a., find the total amount invested.

- Rs. 22,000
- Rs. 20,000
- Rs. 25,000
- Rs. 24,000

Question No.41

An aeroplane travels distances 2500 km, 1200 km and 500 km at the rate of 500 km/h, 400 km/h and 250 km/h respectively. The average speed (in kmph) is :

- 420
- 405
- 575
- 410

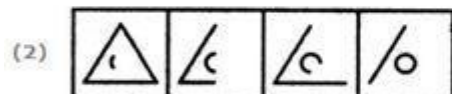
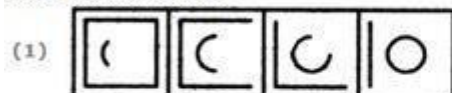
Question No.42

0

In each of the following questions, choose the set of figures which follows the given rule.

Choose the set of figures which follows the given rule.

Rule: Closed figures become more and more open and open figures become more and more closed



- 1
- 2
- 4
- 3

Question No.43

The standard deviation of a binomial distribution is

- sqrt (np)

- np
- npq
- sqrt (npq)

Question No.44

Each of the following questions consists of a word, followed by five words or phrases. Select the word or phrase that is most nearly opposite to the word in meaning (Choose the appropriate antonym).

Insurmountable

- Possible
- Surmountable
- Tackle
- Formidable

Question No.45

A box has 5 black and 3 green shirts. One shirt is picked randomly and put in another box. The second box has 3 black and 5 green shirts. Now a shirt is picked from second box. What is the probability of it being a black shirt?

- 29/72
- 3/16
- 4/9
- 8/72

Question No.46

0

The table shows the National Food Corporation as on 1st Jan, (in Million Tonnes) from 2007 to 2015.

National Food Corporation as on 1st Jan (in Million tonnes)

Sl.No.	Year	Rice	Wheat
1	2007	5.65	5.61
2	2008	8.66	9.24
3	2009	8.63	5.28
4	2010	8.52	3.28
5	2011	11.72	10.82
6	2012	17.42	12.88
7	2013	15.41	13.15
8	2014	12.90	6.90
9	2015	11.49	6.75

What was the percentage decrease in the stock of wheat from 1998 to 2005?

- 26.9
- 24.9
- 26.1
- 25.7

Question No.47

In the following question, there is a series of letters, one of the term is missing. Find out the missing term.

G T Z, F S Y, E R X, D Q W, _____

- V C P
- C P V
- C V P
- V P C

Question No.48

0

Study the following table carefully to answer the questions.

Subject Student	History (75)	Geography (80)	Maths (120)	Science (150)	English (75)	Hindi (50)
A	80	85	89	79	69	76
B	74	79	92	84	72	67
C	86	65	76	82	82	87
D	69	72	62	90	78	68
E	64	64	75	86	65	62
F	76	82	95	78	60	73

Note: Figure in bracket indicates the maximum marks assigned for the subject.

Approximately, what is the percentage of marks obtained by 'C' in Maths, Science and Hindi together?

- 76
- 80
- 85
- 75

Question No.49

Seats for Mathematics, Physics and Biology in a school are in the ratio 5: 7: 8. There is a proposal to increase these seats by 40%, 50%, and 75% respectively. What will be the ratio of increased seats?

- 2: 3: 4
- 6: 7: 8
- 6: 8: 9
- None of these

Question No.50

0

The table shows the National Food Corporation as on 1st Jan,

(in Million Tonnes) from 2007 to 2015.

National Food Corporation as on 1st Jan (in Million tonnes)

Sl.No.	Year	Rice	Wheat
1	2007	5.65	5.61
2	2008	8.66	9.24
3	2009	8.63	5.28
4	2010	8.52	3.28
5	2011	11.72	10.82
6	2012	17.42	12.88
7	2013	15.41	13.15
8	2014	12.90	6.90
9	2015	11.49	6.75

What was the average stock of rice and the average stock of wheat for the period shown?

- 10.16 and 8.21
- 11.16 and 8.21
- 11.16 and 8.12
- 12.32 and 9.24

Question No.51



In a drawer there are 4 white socks, 3 blue socks and 5 grey socks. Two socks are picked randomly. What is the possibility that both the socks are of same color?

- 4/11
- 1
- 2/33
- 19/66

Question No.52



Water : Thirst ::

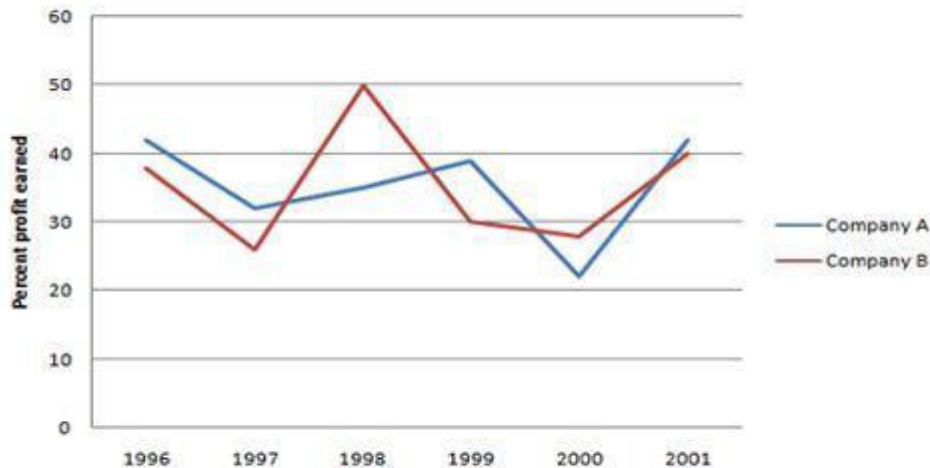
- Sun : Energy
- Food : Hunger
- Appetite : Meal
- Ice-Cream : Cold

Question No.53



0

Study the following graph to answer the following questions: Percent profit earned by two companies A & B over the years. Profit = Income - Expenditure.



Expenditure of Company B in years 1996 and 1997 were in the ratio of 5:7 respectively. What was the respective ratio of their incomes?

- 10:13
- 8:13
- 13:14
- None of these

Question No.54

The concept of 'Universal Banking' was implemented in India on the recommendations of:

- Y H Malegam Committee
- S Padmanabhan Committee
- Abid Hussain Committee
- R H Khan Committee

Question No.55

Read the following clues and answer the questions.

Ms. Kaviya and her three roommates are all busy career women, with little time (or energy) for cooking meals, so they have devised a 'dinner duty' rotation: each woman is assigned to cook dinner on a different night, from Monday through Thursday. (On weekends, they eat out). From the following clues, determine each woman's full name and assigned night for 'dinner duty', along with the main dish which each cooked on her night last week (one woman made mutton).

- a. Asha (who is not Ms. Tejasree) cooks dinner earlier in the week than Ms. Elavarasi, but later than the roommate who served tandoori chicken
- b. Neither Bhargavi nor Ms. Tejasree has Monday's dinner duty
- c. Sahana is not Ms. Mumtaj
- d. Deepika serves her meal later in the week than the roommate who cooked fish curry, who does not cook on Monday.
- e. Tuesday's meal was fried chicken.

Who among the following cooks dinner on Monday?

- Sahana
- Asha
- Deepika
- Bhargavi

Question No.56



Which among the following is a qualitative tool of monetary policy?

- Credit Ceiling
- Credit rationing
- Cash Reserve Ratio
- Bank Rate

Question No.57



Tick the sentence with the correct use of the verb 'flee'.

- The murderer has flown to Australia.
- The murderer had flown to Australia.
- The murderer has fled to Australia.
- The murderer flew to Australia.

Question No.58



Read the following clues and answer the questions.

Ms. Kaviya and her three roommates are all busy career women, with little time (or energy) for cooking meals, so they have devised a 'dinner duty' rotation: each woman is assigned to cook dinner on a different night, from Monday through Thursday. (On weekends, they eat out). From the following clues, determine each woman's full name and assigned night for 'dinner duty', along with the main dish which each cooked on her night last week (one woman made mutton).

- a. Asha (who is not Ms. Tejasree) cooks dinner earlier in the week than Ms. Elavarasi, but later than the roommate who served tandoori chicken
- b. Neither Bhargavi nor Ms. Tejasree has Monday's dinner duty
- c. Sahana is not Ms. Mumtaj
- d. Deepika serves her meal later in the week than the roommate who cooked fish curry, who does not cook on Monday.
- e. Tuesday's meal was fried chicken.

Who among the following had cooked mutton?

- Ms. Tejasree
- Ms. Mumtaj
- Ms. Elavarasi
- Ms. Kaviya

Question No.59



Put the following sentence into direct speech:
He proposed that they should wait for the award.

- He said, "Let us wait for the award."

- He proposed, "We shall wait for the award."
- He said, "We shall wait for the award."
- He suggested, "We shall wait for the award."

Question No.60

Biodiversity is of use to modern agriculture as a –

- Source of new biodegradable pesticides
- Source of new crops
- Source of material for breeding improved varieties
- All of these

Question No.61

Read the following clues and answer the questions.

Ms. Kaviya and her three roommates are all busy career women, with little time (or energy) for cooking meals, so they have devised a 'dinner duty' rotation: each woman is assigned to cook dinner on a different night, from Monday through Thursday. (On weekends, they eat out). From the following clues, determine each woman's full name and assigned night for 'dinner duty', along with the main dish which each cooked on her night last week (one woman made mutton).

- a. Asha (who is not Ms. Tejasree) cooks dinner earlier in the week than Ms. Elavarasi, but later than the roommate who served tandoori chicken
- b. Neither Bhargavi nor Ms. Tejasree has Monday's dinner duty
- c. Sahana is not Ms. Mumtaj
- d. Deepika serves her meal later in the week than the roommate who cooked fish curry, who does not cook on Monday.
- e. Tuesday's meal was fried chicken.

Fish curry was one of the main dishes cooked during the week. Who was assigned to make it and when was it made?

- Asha, Monday
- Deepika, Wednesday
- Bhargavi, Wednesday
- Sahana, Tuesday

Question No.62

Read the following clues and answer the questions.

Ms. Kaviya and her three roommates are all busy career women, with little time (or energy) for cooking meals, so they have devised a 'dinner duty' rotation: each woman is assigned to cook dinner on a different night, from Monday through Thursday. (On weekends, they eat out). From the following clues, determine each woman's full name and assigned night for 'dinner duty', along with the main dish which each cooked on her night last week (one woman made mutton).

- a. Asha (who is not Ms. Tejasree) cooks dinner earlier in the week than Ms. Elavarasi, but later than the roommate who served tandoori chicken
- b. Neither Bhargavi nor Ms. Tejasree has Monday's dinner duty
- c. Sahana is not Ms. Mumtaj
- d. Deepika serves her meal later in the week than the roommate who cooked fish curry, who does not cook on Monday.
- e. Tuesday's meal was fried chicken.

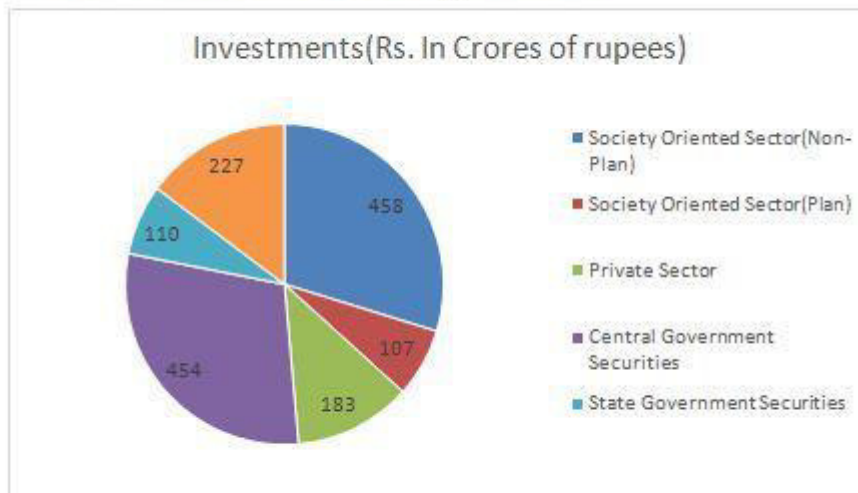
Which among the following is Ms. Tejasree's name?

- Sahana
- Asha
- Bhargavi
- Deepika

Question No.63

0

The gross investments of Life Insurance Corporation of India (in Crores of rupees) in different sectors are shown in the Pie chart given below -



On the basis of above information answer the following questions.

Which is the utmost safe investment by Life Insurance Corporation of India---

- Private sector
- Society oriented sectors(Plan)
- State Government securities
- Central Government Securities

Question No.64

0

Study the following table carefully to answer the questions.

Subject Student	History (75)	Geography (80)	Maths (120)	Science (150)	English (75)	Hindi (50)
A	80	85	89	79	69	76
B	74	79	92	84	72	67
C	86	65	76	82	82	87
D	69	72	62	90	78	68
E	64	64	75	86	65	62
F	76	82	95	78	60	73

Note: Figure in bracket indicates the maximum marks assigned for the subject.

What are the average marks obtained by the six students in Geography?

- 58.9
- 74.5
- 75.4
- 59.6

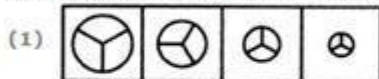
Question No.65

0

In each of the following questions, choose the set of figures which follows the given rule.

Choose the set of figures which follows the given rule.

Rule: As the circle decreases in size, its sectors increase in number



- 2
- 4
- 1
- 3

Question No.66

Which one of the number is wrong in the series?

0, 1, 3, 6, 10, 15, 21, 28, 37, 45

- 45
- 0

- 37
- 10

Question No.67

I am facing west. I turn 45° in the clockwise direction and then 180° in same direction and then 270° anticlockwise. Which direction am I facing now?

- West
- South-west
- North-West
- South

Question No.68

A bag contains 2 red, 3 green and 2 blue balls. Two balls are drawn at random. What is the probability that none of the balls drawn is blue?

- $5/7$
- $2/7$
- $11/21$
- $10/21$

Question No.69

Each of the following questions consists of a word, followed by five words or phrases. Select the word or phrase that is most nearly opposite to the word in meaning (Choose the appropriate antonym).

Combative

- Hospitable
- Kind
- Gentle
- Friendly

Question No.70

If $0.4 : 1.4 :: 1.4 : x$, then value of x is :

- 49
- 4.9
- 0.4
- 0.49

Question No.71

Which of the following cities has been declared the 2019 World Book Capital (WBC)?

- Paris
- Tokyo
- Sharjah

- Rome

Question No.72

A man borrowed Rs. 800 at 10% per annum simple interest and immediately lent the whole sum at 10% per annum compound interest. What does he gain at the end of 2 years?

- Rs. 8
 Rs. 10
 Rs. 6
 Rs. 12

Question No.73

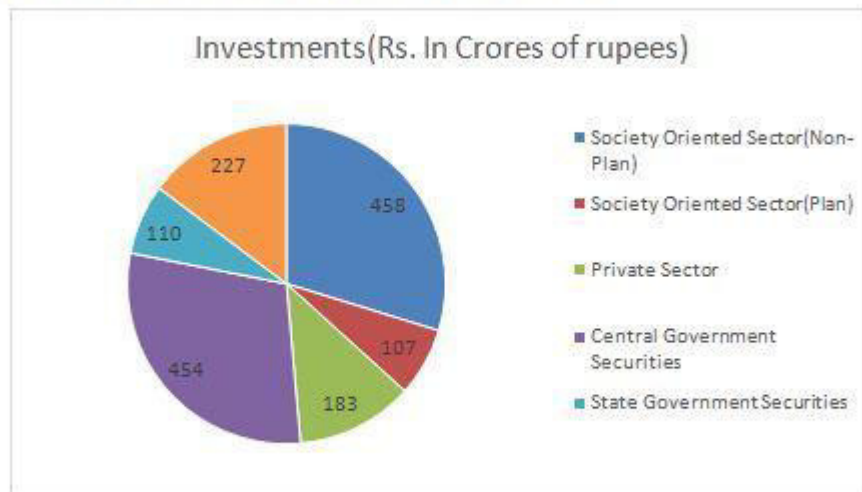
Profit of Rs. 30,000 is to be distributed among A, B and C in the proportion 3: 5: 7. What will be the difference between B's and C's shares?

- Rs. 4,000
 Rs. 2,000
 Rs. 14,000
 Rs. 10,000

Question No.74

0

The gross investments of Life Insurance Corporation of India (in Crores of rupees) in different sectors are shown in the Pie chart given below -



On the basis of above information answer the following questions.

The percentage of gross investments in non-plan and plan sector is nearly _____

- 35%
 36.7%
 25%
 45%

Question No.75

Two trains start from stations A and B and travel towards each other at speeds of 50 kmph and 60 kmph respectively. At the time of their meeting the second train has travelled 120 km more than the first. The distance between A and B is :

- 1200 km
- 990 km
- 1440 km
- 1320 km

Question No.76

When huge amount of sewage is dumped into a river, the biological oxygen demand will –

- Increase
- Remain unchanged
- Slightly decrease
- Decrease

Question No.77

What does the Article 352 of the constitution Contain?

- Provision regarding declaration of emergency
- Powers of the High Court
- Powers of the Prime Minister
- Division of powers between the Centre and the State

Question No.78

0

The table shows the National Food Corporation as on 1st Jan, (in Million Tonnes) from 2007 to 2015.

National Food Corporation as on 1st Jan (in Million tonnes)

Sl.No.	Year	Rice	Wheat
1	2007	5.65	5.61
2	2008	8.66	9.24
3	2009	8.63	5.28
4	2010	8.52	3.28
5	2011	11.72	10.82
6	2012	17.42	12.88
7	2013	15.41	13.15
8	2014	12.90	6.90
9	2015	11.49	6.75

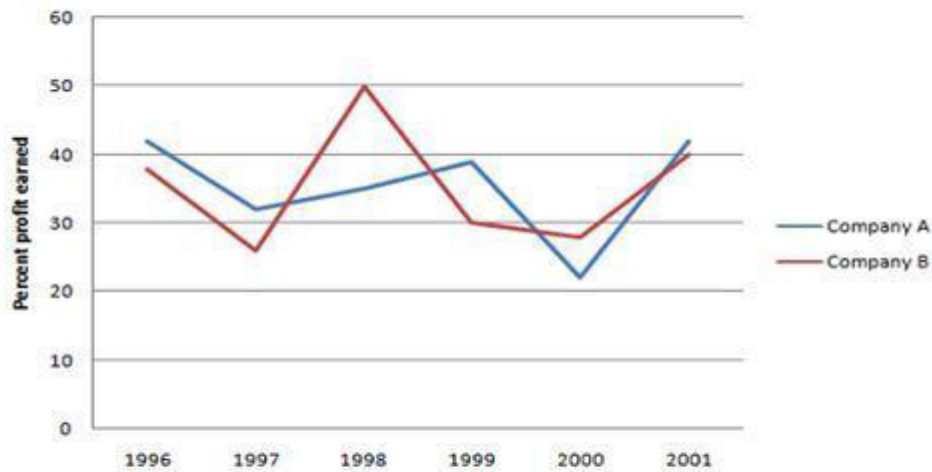
The stock of wheat was what percent of the stock of rice in 2012?

- 74.93
- 71.94
- 73.94
- 73.49

Question No.79

0

Study the following graph to answer the following questions: Percent profit earned by two companies A & B over the years. Profit = Income - Expenditure.



If the expenditure of Company A in 1997 was Rs.70 lakhs and income of Company A in 1997 was equal to its expenditure in 1998, what was the total income (in Rs. lakh) of the Company A in 1997 & 1998 together?

- 131.25
- 175
- 218.75
- Cannot be determined

Question No.80

Each of the following questions consists of a word, followed by five words or phrases. Select the word or phrase that is most nearly opposite to the word in meaning (Choose the appropriate antonym).

Pragmatic

- Impractical
- Unwise
- Theoretical
- Silly

Question No.81

A train 90 m long is travelling at the rate of 40 kmph. A man is running at a speed of 5 kmph in a direction opposite to the motion of the train. The time taken by the train to cross the man is

- 2 sec
- 92 sec
- 66 sec
- 7.2 sec

Question No.82

What is the theme of the 2019 World Earth Days (WED)?

- Protect our species
- Better water, Better Jobs
- Water and Energy
- Nature for Water

Question No.83

Albert invested an amount of Rs. 8,000 in a fixed deposit scheme for 2 years at compound interest rate 5% p.a. How much amount will Albert get on maturity of the fixed deposit?

- Rs. 8,600
- Rs. 8,620
- Rs. 8,800
- None of these

Question No.84

A train covers a certain distance in 50 minutes, if it runs at a speed of 49 kmph on an average. The speed at which the train must run to reduce the time of journey to 40 minutes, will be :

- 70 km/h
- 55 km/h
- 60 km/h
- 50 km/h

Question No.85

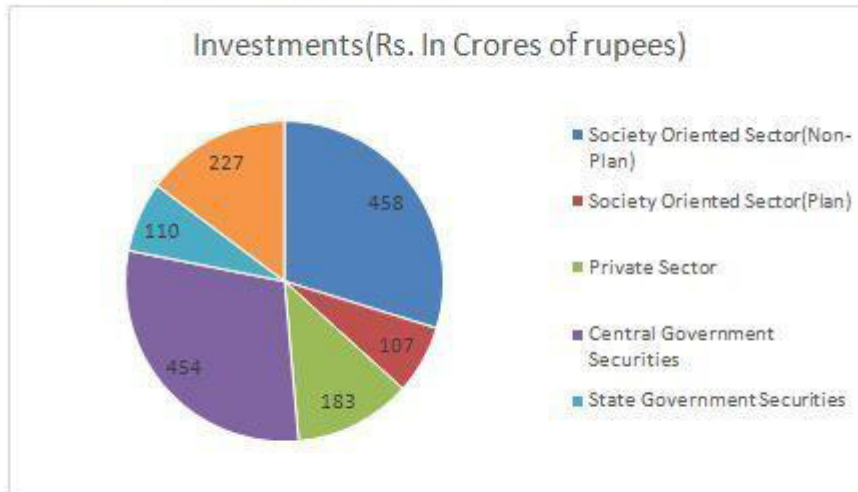
'IUCN' Stands for –

- Inter-state Unity of Culture Nature
- International Unity on Community and Nationality
- International Union for the conservation of Nature and Natural Resources
- Indian Union Congress Nation

Question No.86

0

The gross investments of Life Insurance Corporation of India (in Crores of rupees) in different sectors are shown in the Pie chart given below -



On the basis of above information answer the following questions.

The percentage of gross investments in State Government Securities is nearly -

- 7.8%
- 7.1%
- 8.6%
- 9.2%

Question No.87

The computer monitor is appeared like a TV set but cannot perform the function of -

- An immediate picture
- Clear picture
- Display graphics
- Receiving of TV signals

Question No.88

The report of the Public Accounts Committee is presented to -

- Lok Sabha
- Rajya Sabha
- President
- Prime Minister

Question No.89

Each of the following questions consists of a word, followed by five words or phrases. Select the word or phrase that is most nearly opposite to the word in meaning (Choose the appropriate antonym).

Frugality

- Thoughtless
- Uneconomical
- Extravagance

- Carelessness

Question No.90

If $A : B = 8 : 15$, $B : C = 5 : 8$ and $C : D = 4 : 5$, then $A : D$ is equal to :

- 15 : 4
 4 : 15
 8 : 15
 2 : 7

Question No.91

The Country which hosted the First World Earth Summit on conservation of environment is –

- Brazil
 UK
 India
 USA

Question No.92

Such a network which helps in communicating regional, national and global information through large institutions is called –

- WAN
 LAN
 MAN
 VAN

Question No.93

0

The table shows the National Food Corporation as on 1st Jan, (in Million Tonnes) from 2007 to 2015.

National Food Corporation as on 1st Jan (in Million tonnes)

Sl.No.	Year	Rice	Wheat
1	2007	5.65	5.61
2	2008	8.66	9.24
3	2009	8.63	5.28
4	2010	8.52	3.28
5	2011	11.72	10.82
6	2012	17.42	12.88
7	2013	15.41	13.15
8	2014	12.90	6.90
9	2015	11.49	6.75

What was the percentage increase in the stock of rice from 2007 and 2015?

- 104.3
 103.8
 104.1

Question No.94

Which of the following is/are the aim/aims of “Digital India” Plan of the Government of India?

- i. Formation of India’s own Internet companies like China did.
- ii. Establish a policy framework to encourage overseas multinational corporations that collect Big Data to build their large data centres within our national geographical boundaries.
- iii. Connect many of our villages to the Internet and bring Wi-Fi to many of our schools, public places and major tourist centres.

Select the correct answer using the code given below:

- i and ii only
- i, ii and iii
- ii and iii only
- iii only

Question No.95

Each problem, given below, consists of a word or phrase. Choose one word, whose meaning is closest to that of the word or phrase.

Extreme eagerness and desire to get or keep wealth

- Avarice
- Average
- Parsimony
- Averse

Question No.96

Each problem, given below, consists of a word or phrase. Choose one word, whose meaning is closest to that of the word or phrase.

Quick and skilful in using mind or hand

- Sanguine
- Adroit
- Sober
- Advisable

Question No.97

In the following series the numbers are changing in a specific order, if they continue to change in the same way, what will be the next term?

2, 20, 74, 110,

- 132
- 115
- 182
- 144

Question No.98

Pointing to a photograph Arun said, 'she is the mother of my brother's son's wife's daughter.' How is Arun related to the lady?

- None of these
- Uncle
- Cousin
- Daughter-in-law

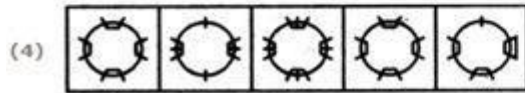
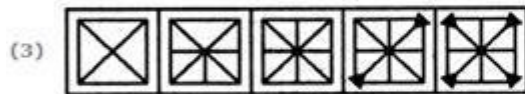
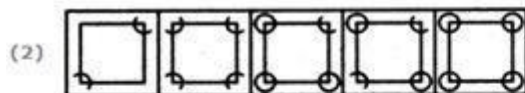
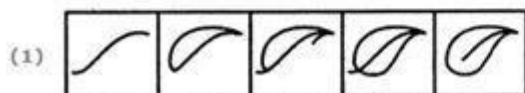
Question No.99

0

In each of the following questions, choose the set of figures which follows the given rule.

Choose the set of figures which follows the given rule.

Rule: The series becomes complex as it proceeds.



- 4
- 3
- 2
- 1

Question No.100

Each of the following questions consists of a word, followed by five words or phrases. Select the word or phrase that is most nearly opposite to the word in meaning (Choose the appropriate antonym).

Enterprising

- Gloom
- Scared
- Dull
- Timid